



Cabin 26

Quarter-Share Opportunities



Cabin 26

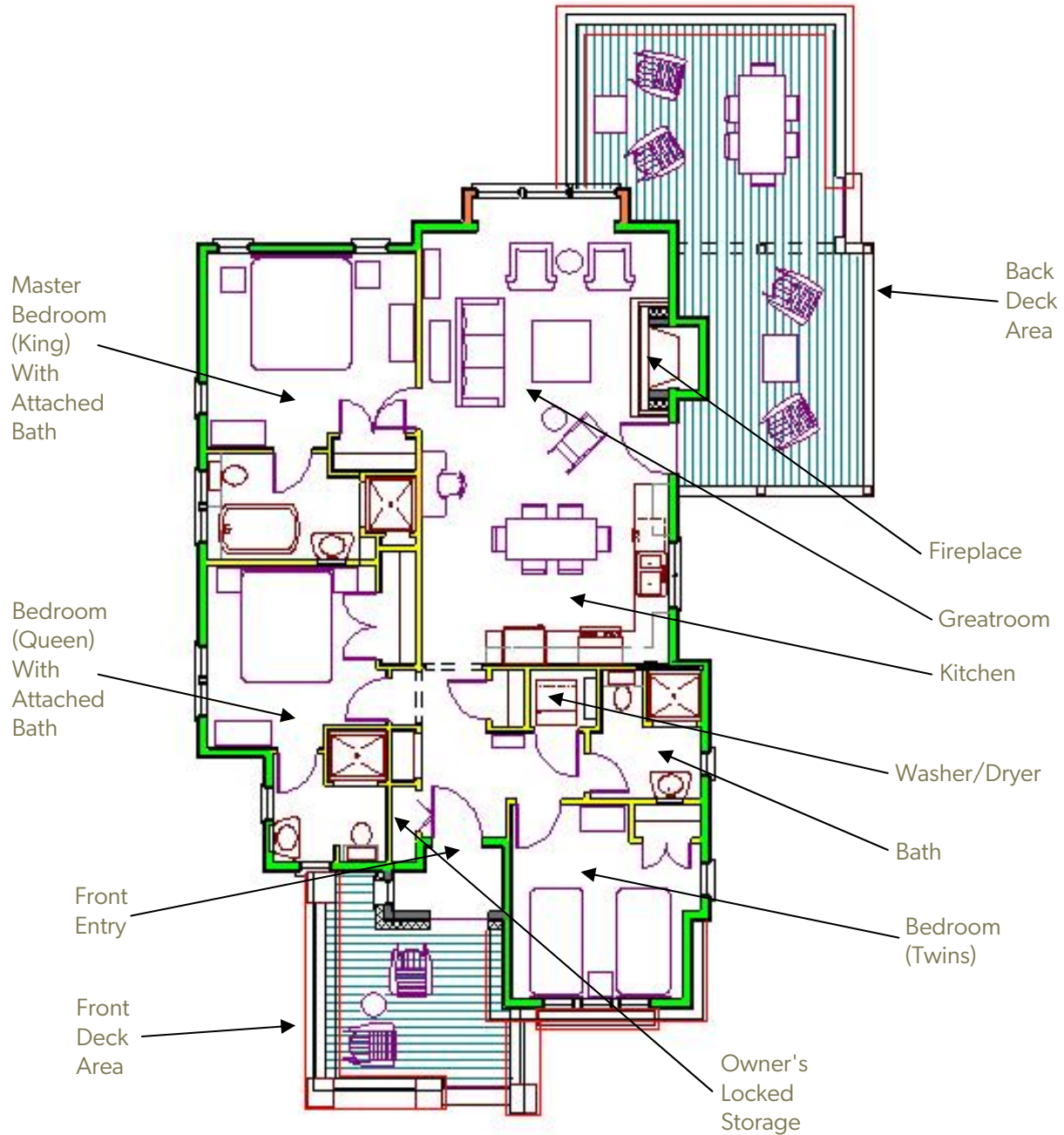
This beautiful three bedroom, three bath cabin is located in the pine bench area near the trout pond in a private forested area. Features include clear grained fir plank flooring, knotty pine paneling, classic gas/log heat stone fireplace, retro dual-fuel range and appliances, farm style sink, and washer/dryer. Antiques mix with new furnishings for a perfect blend of comfort and historical feel. From the custom wood-paneled ceilings to the hand hewn beam in the entry, this cabin has it all.



\$249,900
Per share



Cabin 26 Floorplan



Cabin Features:

Cedar Decks
Wood Windows
Gas Cooktops
Gas/Log Heat Stove
Beautiful Furnishings

Fir Plank Floors
Knotty Pine Paneling
Farm Kitchen Sink
Tile Bathroom Floors & Showers
Period Antiques

Stone Exterior Accents
Retro Appliances
Butcher Block Kitchen Counter Tops
Washer/Dryer
Locked Interior & Exterior Owner's Storage



	Future Cabins
	Cabin For Sale
	Existing Cabins and Common Buildings
	Existing Native Forest
	Existing Native Shrubs & Grasses
	Lawn
	Existing and Proposed Trails



Cabin Location Map

Note: Map is diagrammatic and is subject to change



marketing@lakecreeklodge.com